

NCFE CACHE Level 3 Applied General Certificate in Health and Social Care



Health and Social Care

Passport to Sixth Form

Name: _____

Contents

What will I be studying?	Page 3
Recommended Netflix Programmes	Page 4
Other recommended watching	Page 5
Recommended Reading	Page 6
Representations Task	Page 7
Learning Log	Page 8
Key word Glossary	Page 9-10
A-Z Challenge	Page 11
History of the NHS	Page 12
Roles in Health and Social Care	Page 13
Frontline roles in a pandemic	Page 14
True or False	Page 15
Extension Task – COVID-19 & Public Health	Page 16-20
Checklist for September	Page 21



What will I be studying?

This course allows you an insight in the many roles available within health and social care from nurses to social workers to child care assistants and beyond they have many key features that we shall explore and apply. You will be studying a range of units which will help you to gain skills that will be valuable in your chosen profession or future study. You will learn about the human body and mind alongside the changes across time. You will learn what it means to work in the sector and what skills and behaviours you will need to develop. We will study the following units, units 1 and 2 in year 12, 3, 4 and 5 in year 13.

During unit one, **Functions of Health and Social Care**, you will focus on:

- Different services within health and social care
- The function of services within health and social care
- Legislation specific to health and social care

During unit two, **Human Growth and Development**, you will focus on:

- Stages of development from conception to birth
- Life stages and key milestones through human growth and development
- Theories of human growth and development

During unit three, **Empowerment in Health and Social Care**, you will focus on:

- The importance of empowerment
- Factors affecting empowerment
- Models of advocacy

During unit four, **Health Education**, you will focus on:

- Life style choices and the impact these have on health
- Health education and promotion
- Health campaigns

During unit five, **Anatomy and Physiology in Health and Social Care**, you will focus on:

- The structure and functions of the organ systems in the human body
- Homeostasis
- Physiological measurements and the reasons for taking them

The 5 units are coursework based, comprising of pass, merits, and distinctions. There is also one external examination and 1 externally marked controlled written assessment.

NETFLIX

Babies



Marriage Story



Louis Theroux: Extreme love, Dementia



Five Feet Apart



Brain on Fire



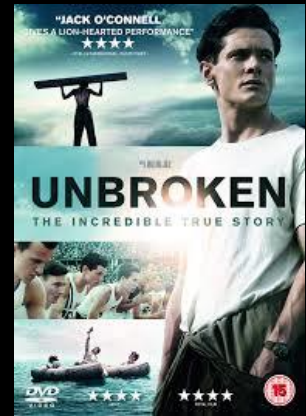
Theory of Everything



What to expect when you're expecting



Unbroken



Girl, interrupted



Call the Midwife



13 Reasons Why



Pandemic: How to prevent an outbreak



Recommended Watching for Health and Social Care

Beyond NETFLIX

Elizabeth is Missing

Rio & Kate: Becoming
a Step family

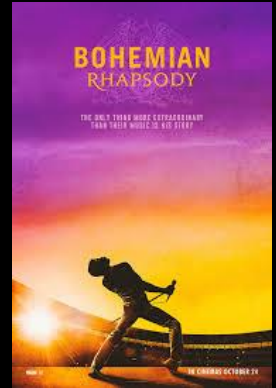
Jesy Nelson: Odd
one out

Bohemian Rhapsody

BBC iPlayer



DVD



Confessions of a
Junior Doctor

Born to be
different

Secret life of... Year
Olds

Still Alice

4 On Demand



DVD



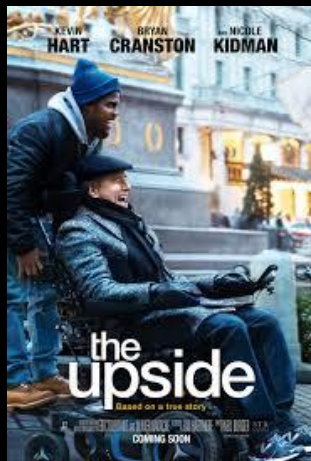
The Children Act

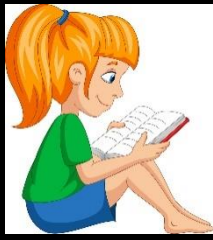
The Upside

Beautiful Boy

Miss you Already

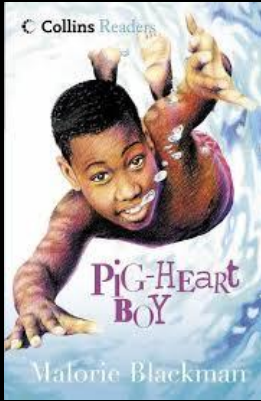
Amazon Prime



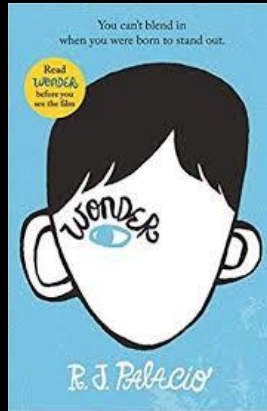


Beyond NETFLIX

Pig Heart Boy by Malorie Blackman



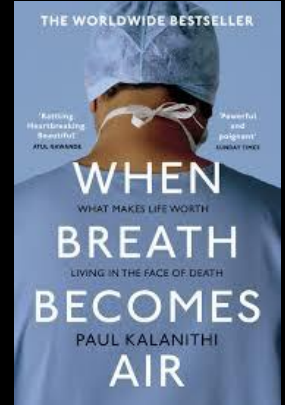
Wonder by R.J. Palacio



This is Going to Hurt by Adam Kay



When Breathe becomes Air by Paul Kalanithi

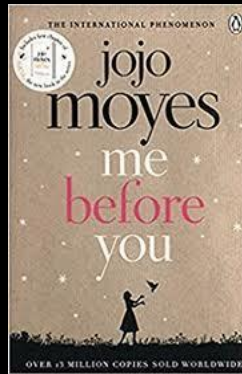


Further Reading

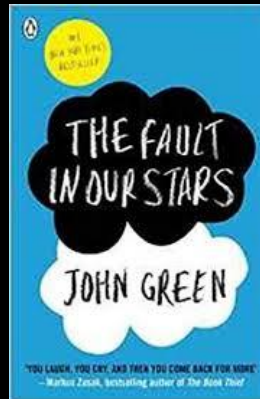
The Hate U Give by Angie Thomas



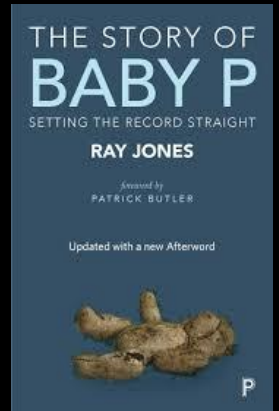
Me Before you by Jojo Moyes



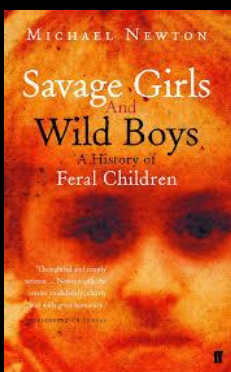
The Fault in Our Stars by John Green



The Story of Baby P by Ray James



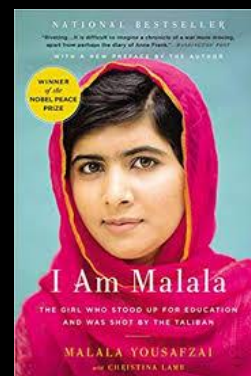
Savage Girls and Wild Boys by Michael Newton



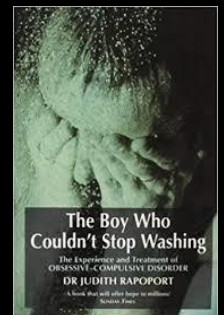
The Language of Kindness by Christie Watson



I am Malala by Malala Yousafzai



The Boy Who Couldn't Stop Washing by Dr Judith Rapoport



Recommended Reading for Health and Social Care

Yes some of these are also films, if you prefer!

Health and Social Care in the Media



It is important to make the public realise about the issues which are prevailing in society relating to health and social care. One way in which public awareness is raised about health and social care in general and issues that exist within the health and social care sector is through the media.

Your task is to pick;

- x2 Films
- x1 Book
- x2 Documentaries

You will then be asked to write an essay with the following title: **'Discuss the portrayal of Health and Social Care within the media'**

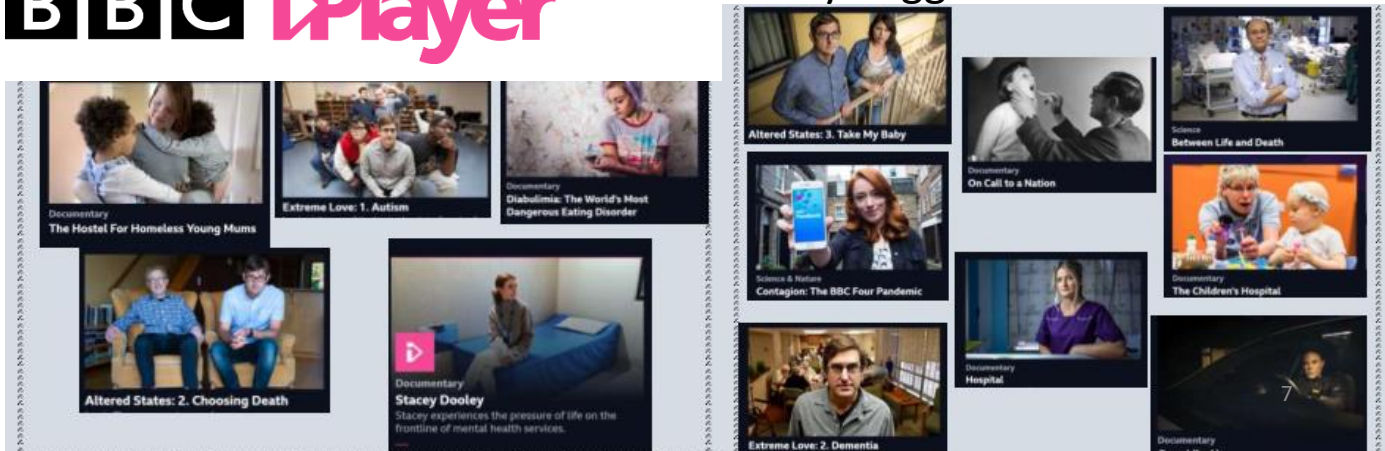
You must watch/read the some of the examples on the previous slides you have picked and create notes to help with your essay. Consider the following:

- What issues, if any, are being raised in the stimulus?
- How does the stimulus present H&SC?
- Is the stimulus informative/helpful and why?
- Are there any quotes/scenes etc that stand out to you and why?
- How effective is the stimulus in raising public awareness about H&SC/Issues?

This list is NOT exhaustive there may be other questions/ideas you wish to consider as you watch or read.




Documentary Suggestions:



GLOSSARY

Task: Research and define the following words which are central to the Modern Britain unit. Then, draw a symbol to summarise the term and help you remember it.

Term	Definition	Symbol
Adolescence	An important status change following the onset of puberty during which a young person develops from a child into a adult.	
Advocate		
Attachment		
Care package		
Clinical Commissioning Groups (CCGs)		
Development		
Discrimination		
Diversity		
Empathy		
Ethical		



GLOSSARY

Term	Definition	Symbol
Fine Motor Skills		
Growth		
Holistic Approach		
Milestone		
Nature		
Nurture		
Risk Assessment		
Safeguarding		
Self-Concept		
Self-Esteem		

Research a list of Health and Social Care jobs/ medical terms for each letter of the alphabet



A B C D E F G H
I J K L M N O P
Q R S T U V W
X Y Z ! ?



A

B

C

D

E

F

G

H

I

J

K

L

M

N

O

P

Q

R

S

T

U

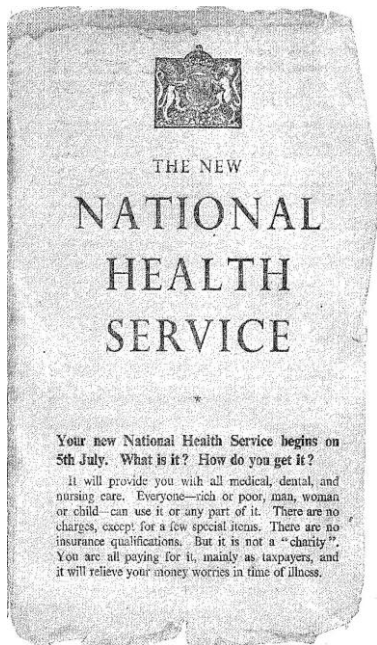
V

W

X

Y

Z



History of the NHS

Make a leaflet outlining the history of the NHS

Include sections on:

- Healthcare before the NHS
- When/ why the NHS was produced
 - What the NHS does
- Significance of the NHS
- How is the NHS different in other countries



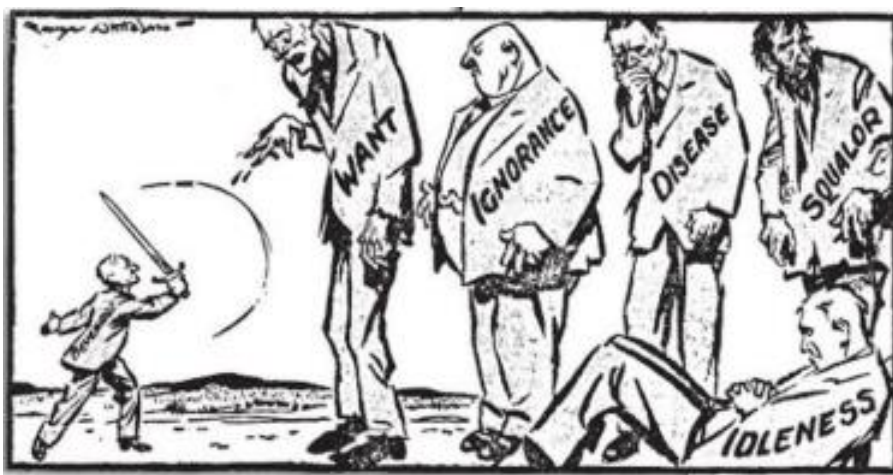
The Beveridge Report, 1942

In 1942, a plan had been presented by William Beveridge, a senior civil servant, detailing key areas for post-war reconstruction, aimed at establishing a national system of welfare for the people. It identified 'five giants' that were to be overcome: want, disease, ignorance, squalor and idleness.

When the Beveridge Report first appeared, it was welcomed by all the parties. There was broad agreement that protection needed to be provided for all members of society, and so when Labour came to power in 1945, they implemented the proposals in this report, thereby establishing the welfare state, a system which all governments after 1951 accepted in its essentials. This common acceptance became known as **consensus**.

Giant	The 1945 Labour Government's Solution
Want	To be ended by National Insurance. The National Insurance Act created a system whereby the government, employers and employees all paid for insurance which would pay out in the event of unemployment, sickness, maternity and retirement.
Disease	To be ended by a comprehensive health service. The National Health Service Act provided free medical and hospital treatment for all (the NHS).
Ignorance	To be ended by an effective education system. The Labour Party continued to support the Conservative's 1944 Butler Education Act which provided free education within grammar schools, technical schools or secondary schools.
Squalor	To be ended by slum clearance and rehousing
Idleness	To be ended by full employment

The idealism that inspired the government's welfare programme came at a heavy financial cost, which added to the financial burdens it inherited in 1945.



Research task



Choose a professional from the following:

- Midwife
- Paramedic
- Paediatric nurse
- Nutritionist
- Physiotherapist

You could choose your own idea from health and social care roles if you prefer.

Create a fact file for your chosen job role

You could include:

- A day in the life of.....
- General roles and responsibilities
- Routes into the role/ qualifications required
 - Skills & qualities
 - Average pay
 - Where they work
 - Who they work with

And anything else you think may be suitable



On 'The front line'.....

- What does it mean when people talk about being 'on the front line'?

Government declares a 'pandemic'.....

- What does it mean when people talk about the situation as a pandemic?

Job Role	Definition	Roles and Responsibilities	How do they respond in a pandemic?
District Nurse			
Auxiliary Nurse			
Palliative Care			
Phlebotomist			
Domiciliary Carer			
Adult Social Worker			



True or False?

Colour code the statements in order to show if they are true or false.

True

False

A district nurse will only work with the elderly.

A palliative care nurse will get involved with everyone who gets coronavirus.

Adult social workers support people with poor mental health.

Domiciliary carers provide care in the home.

Only phlebotomists are allowed to take blood.

Auxiliary nurses help support other nurses to do their roles.

Optional Extension Task:

Health and Social Care in a Pandemic

At the moment, we are living through a time when health and social care services are needed more than ever! Those who have chosen this as a profession have stepped up to look after those affected by the COVID-19 pandemic. You will be seeing on the news constant stories about the amazing work that is going on in the British NHS and Care system and this task is your opportunity to find out more about pandemic control in the area and also the work of the World Health Organisation (WHO) in organising a global response. This will require you to research and understand why the steps have been taken around us and how this fits into the global picture.

As this is an extension task you can complete as much of this as you like or are able to but this level of thinking and also detail will help build the skill required for distinction or distinction in your level 3 course.*

Task 1 – What is the role of health promoters?

You will need to read through the following information and complete some research in order to explain the roles of the following organisations in maintaining the health of the population:

World Health Organisation (WHO).

Department of Health

Public Health Agency

Clinical Commissioning Groups (CCGs)

Health professionals

Find out about the organisation of public health promotion within the United Kingdom.



The role of Health Promoters

Aims

Health promoters aim to improve the health of individuals and the population and reduce health inequalities globally, nationally and locally.

Global health promotion

The World Health Organization, within the United Nations promotes and protects good health worldwide, by providing information about disease outbreaks, co-ordinating crisis intervention and the response to humanitarian emergencies; establishing International Health Regulations and an international system of classifying diseases.

National, regional and local health structures in England include the

- Department of Health
- Public Health Agency
- Clinical Commissioning Groups (CCGs)
- Health professionals

In England, the Department of Health (DH) leads, shapes and funds health and care while Public Health England protects and improves the nation's health and well-being, and reduces health inequalities. Local authorities are responsible for public health and do this through health and well-being boards which include representatives for all CCGs in the area, among others. Health and well-being boards assess the needs of their local community through Joint Strategic Needs Assessments (JSNAs) then agree priorities in Joint Health and Well-Being Strategies (JHWSs). Together JSNAs and JHWSs form the basis of commissioning plans for public health for CCGs.

Task 2: Why do you think is necessary for local authorities to have control over the needs of the people in their area? For instance, think about the people living in Milton Keynes and then compare that to the population living in Exeter; do they have the same needs? What would their focus for health be on?

Have a look at Somerset CCG, they are having a funding crisis due to the high proportion of elderly residents needing care.

Approaches to promoting public health and well-being

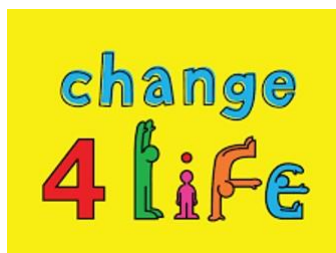
Promoting public health and well-being includes:

1. Monitoring the health status of the community and identifying those most at risk, e.g. children, unemployed, older people, minority ethnic groups.
2. Health surveillance programmes.
3. Targeted education and health awareness and health promotion programmes.
4. Socio-economic support to reduce health inequality between individuals and communities, e.g. winter fuel payments, free school meals, housing support.
5. Improving access to health and care services.
6. Co-ordinating national and local services.
7. Disease registration to inform of health trends and for strategic health planning.
8. Statutory duty to notify certain communicable diseases e.g. measles, tuberculosis (in this case COVID-19).

Task 3 – Find examples of the British Government and relevant agencies putting these measures into practice; e.g. what have they done for those receiving free school meals? How have they identified those most at risk and supported them?

Task 4: Compare Britain’s response to at least one other country and its response to the pandemic. Assess the strengths and weaknesses in each approach to looking after public health.

Challenge: Look at least 3 news articles from a variety of sources and consider what they say about the British approach to the pandemic. Do you think it could have been improved? Justify your suggestions.



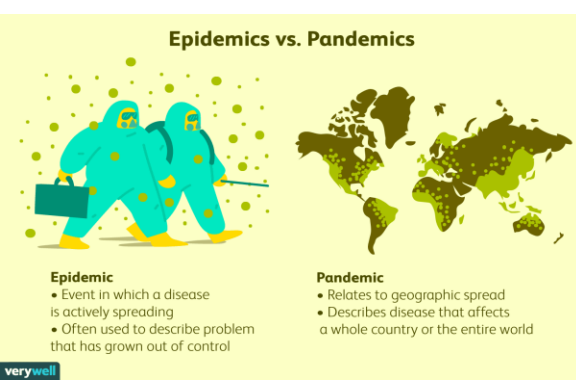
Pandemic Phases

2018 marked the 100th anniversary of one of the largest public health crises in modern history, the 1918 influenza pandemic known colloquially as “Spanish flu.” The intensity and speed with which it struck were almost unimaginable – infecting one-third of the Earth’s population, which at the time was about 500 million people. By the time it subsided in 1920, tens of millions people are thought to have died. By 1952, it was decided that an influenza surveillance system was needed for the “collection, correlation, and distribution of information regarding occurrence, epidemiology and laboratory findings”. This is known as the Global Influenza Surveillance and Response System (GISRS). It was predicted that the next pandemic would most likely be caused by influenza.

This has lead WHO to conduct and watch outbreaks of strains of flu and cold across the world and create detailed reports on the readiness of countries and also to map out the stages of a pandemic and main actions to be taken in order to minimise the impact of this type of event.

Task 5: Below is a link to the WHO pandemic phase descriptions; use these alongside research on the response to the COVID-19 Pandemic in order to complete the table on the next slide.

https://www.who.int/influenza/resources/documents/pandemic_phase_descriptions_and_actions.pdf



Phase	WHO Suggested Actions	UK Actions	Effectiveness of response	Recommendations for future pandemic planning
1				
2				
3				
4				
5				
6				
Post Peak				

Passport to Sixth Form

Check list

Use this list to make sure you have everything you need to hand in in September in order to start your Level 3 BTEC in Health and Social Care.

Essay about representations in the media, page 7.

Complete at least 6 sections of the learning log, page 8.

Completed glossary of key terms, page 9-10.

Filled in A-Z of Health and Social Care, page 11.

Leaflet on the history of the NHS, page 12.

One in depth fact file on a role within the Health and Social Care sector, page 13.

Completed front line roles table, page 14.

Highlighted true or false sheet, page 15.

Optional, Extension task – Current events – Health and Social Care in a pandemic, page 16